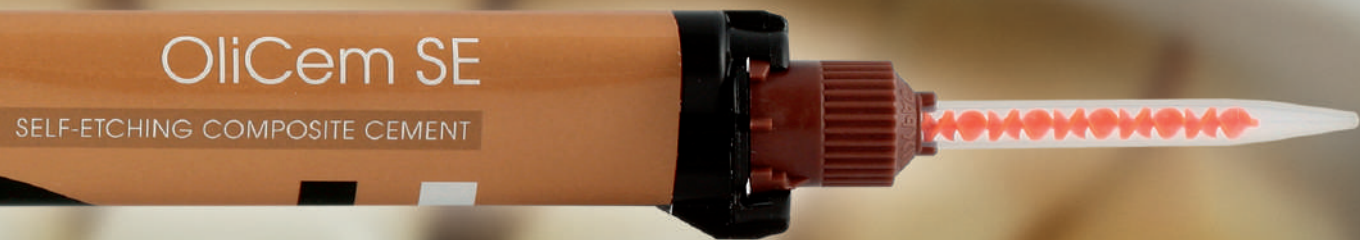




**OLIDENT**  
INNOVATION

# OliCem SE

SELF-ADHESIVE CEMENTING POWER



OliCem SE

SELF-ETCHING COMPOSITE CEMENT



OliCem SE

5ml

SELF-ETCHING COMPOSITE CEMENT

New

- high cementing power
- controlled expansion
- predictable self-neutralization
- long-term color stability
- no need to refrigerate



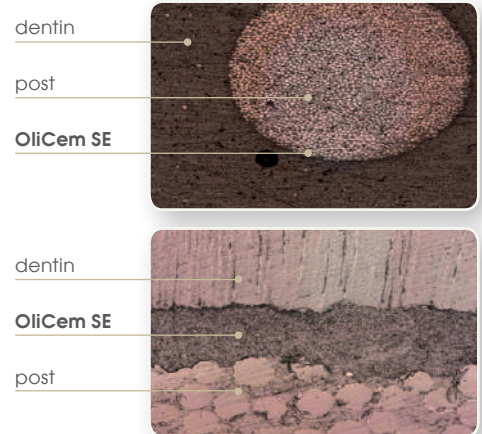
## OliCem SE

Self-adhesive dual-cure composite material for final cementation of crowns, bridges, inlays/onlays restorations and posts. Provides high strength adhesion to dentin, enamel, zirconium - 16MPa, ceramics, composites, titanium and metal.



OL 031TR - 1 syringe 5ml (color: Transparent)  
10 mixing tips, 5 intraoral tips, Long

Microscopic images show the **excellent marginal integrity** between **OliCem SE**, root post and dentin.



### High adhesion strength without etching, conditioning or bonding

The entire procedure of cementation requires just a few steps, with no risk dentin overetching or or sensitivity. The product is self neutralizing<sup>①</sup> - with an initial low pH that increases after the application to 5.5 pH in a few hours. This rise in pH prevents post cementation sensitivity.

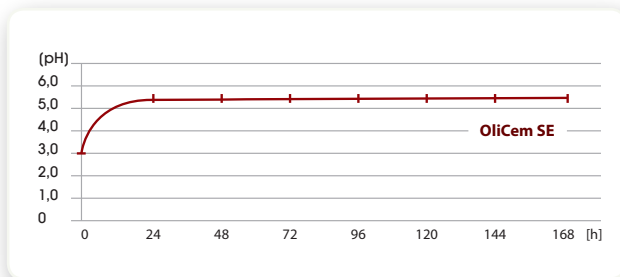
### Perfect fit reconstruction and predictable work

Thin film - 12µm<sup>②</sup> - provides precise cementation while delicate expansion of cement eliminates its shrinkage from the margins. This ensures excellent marginal integrity. The dual cure system allows pre-curing of the positioned restoration, as well as easy removal of excess in its initial flexible phase.

### Excellent color stability and natural fluorescence

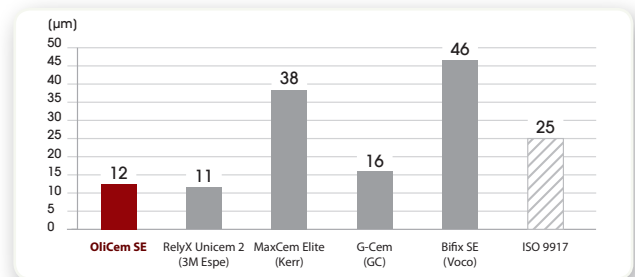
Proven color stability is satisfying even for transparent ceramics, this guarantees a long-lasting aesthetic effect. An additional advantage is the significant release of fluoride, which results in strengthening the surrounding tissues.

① Self-neutralization of **OliCem SE**.




\* Internal manufacturer research; Germany.

② The film thickness of **OliCem SE** and competitive materials.



Your business Partner:

 Join us on Facebook

**OLIDENT**  
ul. Christo Botewa 1B  
30-798 Kraków  
tel. +48 12 29 00 502  
fax: +48 12 29 00 325  
info@olident.com  
www.olident.com



**OLIDENT**



EN ISO  
13485:2012  
+AC:2012



Olident is not responsible for any printing errors.